



# FIELD MAINTENANCE SERVICE

*The Pump People*  
**Patterson**  
A Gorman-Rupp Company

ISO 9000-2008 Registered  
ISO 14001-2004 Registered

# FIELD SERVICE MAINTENANCE

## Service on Patterson pumps

Patterson Pump Company – one of America’s leading designers, engineers and manufacturers of axial and mixed flow, sewage, vertical in-line, vertical turbine, split case and end suction pumps, and Flo-Pak® HVAC, plumbing, commercial and industrial package pumping systems, noted for our performance and dependability – offers unparalleled field maintenance service. Its service group has over 100 years of experience in equipment repair.

### SERVICE

We provide personal training to keep your equipment in top-notch condition. Our service group is dedicated to your specific needs – from a single part requirement to a complete rebuild.

### O.E.M.

Parts and service can give your equipment an extended life.

### SAVINGS

With lower maintenance costs, less down time, and parts that you can be sure of. Patterson offers the highest quality parts and workmanship available...at a competitive price.

*The Pump People®*

# FIELD SERVICE MAINTENANCE

**Plus..prompt delivery of spares parts for most equipment**

Return your Patterson equipment to its original specifications with genuine O.E.M. parts. You'll save in the long run. We guarantee it!

For prompt, no-obligation quotes, call, fax, or email your nearest Patterson representative, or, call our service group at 706-886-2101, fax us at 706-886-0023, or email us at [service@pattersonpumps.com](mailto:service@pattersonpumps.com).

## About Servicing The Patterson Group Products

Patterson Pump Company is one of America's leading pump companies. Our roots are deep and our commitment to quality and service are strong.

Dating back to the 1800's, the following companies influenced the design of Patterson Pumps as they exist today:

Baldwin-Lima-Hamilton  
Barr Pump Co.  
Economy Pumping Machinery  
Economy Pumps  
Patterson Industries

Dean Hill Pump Co.  
C.H. Wheeler Mfg. Co.  
Thomas & Smith Inc.  
Midwest Engine Co.  
Wheeler-Economy Pumps

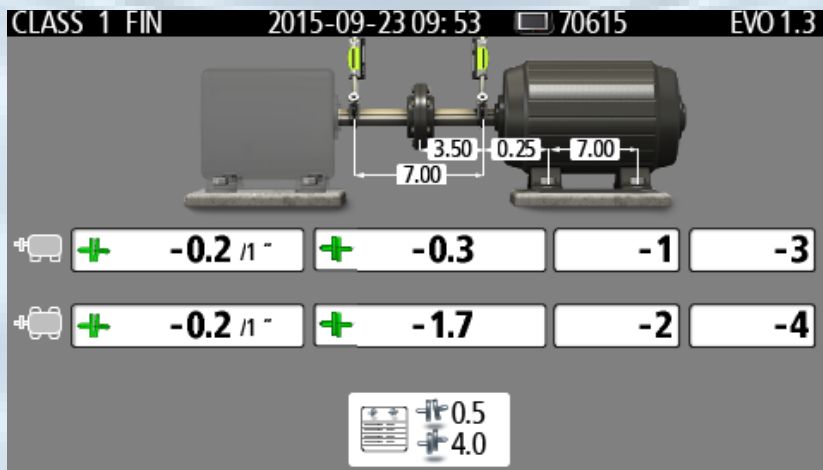
*The Pump People®*

# FIELD SERVICE MAINTENANCE

## Alignment Service

Patterson is pleased to offer our pump alignment service. Alignment can be performed by using the straight edge method, dial indicator method, or laser alignment. Patterson has skilled and trained technicians to be able to use all of these methods. With laser alignment, there is a more accurate shaft to shaft alignment, which in turn reduces errors in the alignment process, and increases Mean Time Between Failure (MTBF). Patterson is ISO 9000 qualified and maintains all of our calibrations to ensure we have accurate calibrated laser alignment equipment.

Patterson's alignment report is easy to read and color coded. When "green," you know that your pump is properly aligned. Below is an example of a completed alignment.

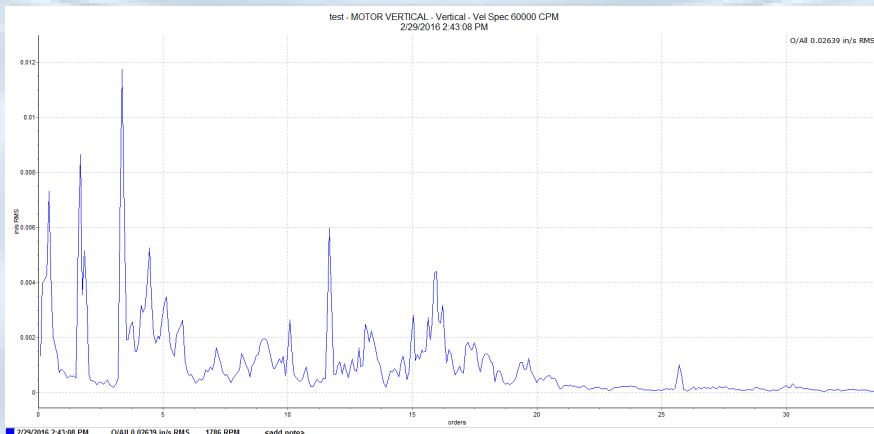
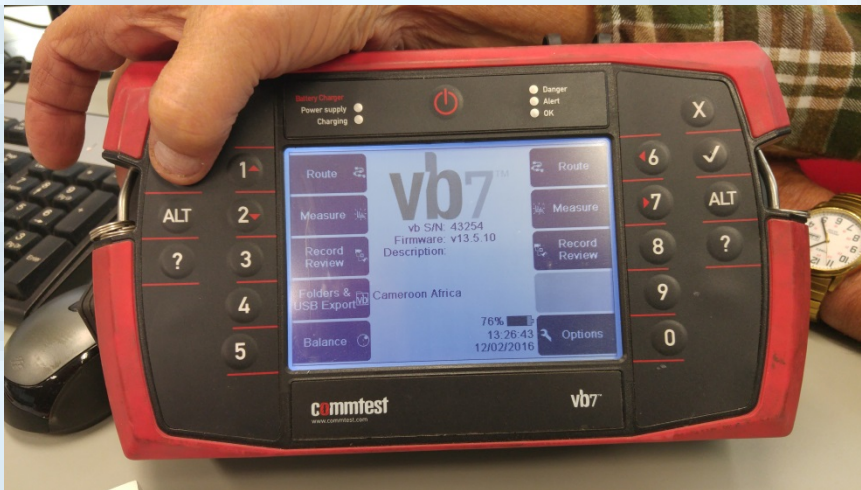


*The Pump People®*

# FIELD SERVICE MAINTENANCE

## Vibration Analysis

We use a Commtest VB7 vibration monitor which allows for quick diagnosis and correction of any balance issues. Patterson Pump is also ISO Category II (18436-2) certified, meaning we have personnel who are trained to analyze the vibration information within ISO standards.



*The Pump People®*



# FIELD SERVICE MAINTENANCE

## Precision Laser Measuring

Patterson's FARO Laser Tracker ION is the most advanced, state-of-the-art laser tracker ever produced, providing a longer measurement range with increased accuracy. With a volumetric accuracy of .002" ( 049mm) at 33 feet (10m), the strictest tolerance measurements can be achieved. Why is higher accuracy important? It provides you with superior measurement certainty for your entire project. This means eliminating rework, which in some cases can cost more than the entire measurement system. The more the error in the measurement instrument is reduced, the more confidence you will have in the results.



*The Pump People®*

# FIELD SERVICE MAINTENANCE

**706-886-2101**

[service@pattersonpumps.com](mailto:service@pattersonpumps.com)

[www.pattersonpumps.com](http://www.pattersonpumps.com)

## **Service on Patterson pumps:**

- ✓ Laser alignment
- ✓ On-site vibration analysis
  - ✓ Inspection
- ✓ Trouble-shooting, testing & evaluation
- ✓ On-site maintenance lube, packing & flow problems
- ✓ Complete rebuild of equipment
- ✓ Field engineering of pumping equipment
  - ✓ Equipment upgrades
  - ✓ Preventative maintenance
    - ✓ On-site training

*The Pump People®*



**Patterson Pump Company**  
A Gorman-Rupp Company  
Post Office 790 – 2129 Ayersville Rd.  
Toccoa, Ga – 30577 U.S.A.  
706-886-2101 – Fax 706-886-0023

PATTERSON PUMP IRELAND LTD.  
MULLINGAR, IRELAND  
EMAIL: [rpelot@ie.pattersonpumps.com](mailto:rpelot@ie.pattersonpumps.com)

PATTERSON PUMP CO. FAR EAST  
SINGAPORE  
EMAIL: [chlow@pattersonsingapore.com](mailto:chlow@pattersonsingapore.com)

PATTERSON PUMP CO. /MIDDLE EAST  
ATHENS, GREECE  
EMAIL: [ageorgakis@pattersonpumps.com](mailto:ageorgakis@pattersonpumps.com)

PATTERSON PUMP CO. /MEXICO  
QUERETARO, MEXICO  
EMAIL: [mtrejo@pattersonpumps\\_mexico.com](mailto:mtrejo@pattersonpumps_mexico.com)

PATTERSON PUMP CO.  
LATIN AMERICA  
EMAIL: [rodolfo.zeledon@patterson-latam.com](mailto:rodolfo.zeledon@patterson-latam.com)